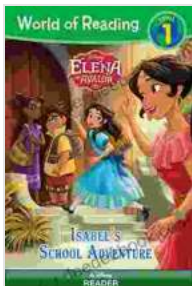


Embark on an Unforgettable Adventure with Isabel School: A Comprehensive Exploration into Outdoor Education Excellence

About Isabel School Programs Expeditions Impact Support



World of Reading: Elena of Avalor: Isabel's School Adventure: Level 1 (World of Reading eBook) by Rolle W.

★★★★☆ 4.6 out of 5

Language : English

File size : 38365 KB

Screen Reader: Supported

Print length : 34 pages

Lending : Enabled

Paperback : 176 pages

Dimensions : 7.99 x 10 x 1.85 inches



About Isabel School

Nestled amidst the majestic Blue Ridge Mountains of North Carolina, Isabel School is a beacon of outdoor education excellence.

Our mission is to foster a deep appreciation for the natural world and empower students to become confident, compassionate, and environmentally conscious leaders.

We firmly believe that outdoor education is an indispensable component of a holistic education. It provides a unique and transformative environment where students:

- Develop essential life skills, such as problem-solving, critical thinking, and teamwork.
- Build character through facing challenges and overcoming obstacles.
- Cultivate a profound connection with nature and a commitment to environmental stewardship.



Our educational philosophy is grounded in experiential learning. We believe that students learn best by doing, exploring, and engaging with their surroundings.

Our dedicated team of experienced educators and outdoor professionals are passionate about providing a safe and supportive learning environment where every student feels valued and encouraged to reach their full potential.

Our Programs

Isabel School offers a wide range of outdoor education programs tailored to students of all ages and abilities.

- **Junior Adventure Program (ages 8-12):** A week-long program that introduces students to the basics of outdoor skills, nature exploration, and environmental awareness.
- **Adventure Program (ages 13-17):** A two-week program that provides students with a more in-depth wilderness experience. They learn advanced outdoor skills, participate in group challenges, and engage in environmental stewardship projects.
- **Expedition Program (ages 15-18):** A month-long expedition that takes students on a journey of self-discovery, leadership development, and wilderness exploration. They backpack through remote areas, whitewater raft, and summit challenging mountains.

Our programs are meticulously designed to cater to the unique needs and interests of our students. We offer flexible scheduling and customizable options to ensure that every student can participate in a program that is right for them.

Unforgettable Expeditions

Isabel School expeditions are the pinnacle of our outdoor education experience. They provide students with the opportunity to immerse themselves in pristine wilderness environments, push their limits, and grow as individuals.

Our expeditions are led by highly trained and experienced guides who prioritize safety and create a positive and supportive learning environment.



Recent expedition destinations include:

- Backpacking in the Great Smoky Mountains
- Whitewater rafting on the Colorado River
- Summiting Mount Whitney
- Exploring the Canadian Rockies

Our expeditions are not only physically challenging but also intellectually and emotionally transformative. Students learn to adapt to unpredictable conditions, work as a team, and develop a deep appreciation for the interconnectedness of the natural world.

Transformative Impact

The impact of outdoor education at Isabel School is profound and long-lasting. Our graduates leave our programs with enhanced:

- **Self-confidence:** They develop a belief in their abilities and a willingness to take on challenges.
- **Resilience:** They learn to overcome obstacles, adapt to change, and persevere through adversity.
- **Leadership skills:** They learn to work effectively with others, inspire their peers, and take initiative.
- **Environmental consciousness:** They gain a deep understanding of environmental issues and a commitment to protecting the planet.

Research consistently shows that outdoor education programs like those offered at Isabel School have a positive impact on student development.

Our graduates go on to pursue diverse careers in fields such as environmental science, education, healthcare, and business.



“ "Outdoor education programs have been shown to improve student outcomes in areas such as academic achievement, social skills, and physical health."

- Journal of Outdoor and Environmental Education ”

Supporting Isabel School

Isabel School is a non-profit organization that relies on the support of our generous donors to continue providing life-changing outdoor education experiences.

Your support can help us:

- Provide scholarships to students in need
- Expand our program offerings
- Acquire new equipment and resources
- Support our dedicated staff

There are many ways to support Isabel School, including:

- **Make a financial donation:** Your tax-deductible donation will directly support our programs and operations.
- **Become a sponsor:** Partner with us to sponsor a specific program, expedition, or initiative.
- **Volunteer your time:** Share your skills and experience by volunteering at our campus or on an expedition.
- **Spread the word:** Help us reach more students by telling your friends, family, and colleagues about Isabel School.

Together, we can create a future where every child has the opportunity to experience the transformative power of outdoor education.

Isabel School

123 Adventure Road

Asheville, NC 28803

(828) 555-1212

info@isabelschool.org





World of Reading: Elena of Avalor: Isabel's School Adventure: Level 1 (World of Reading (eBook)) by Rolle W.

★★★★☆ 4.6 out of 5

Language : English

File size : 38365 KB

Screen Reader : Supported

Print length : 34 pages

Lending : Enabled

Paperback : 176 pages

Dimensions : 7.99 x 10 x 1.85 inches

FREE

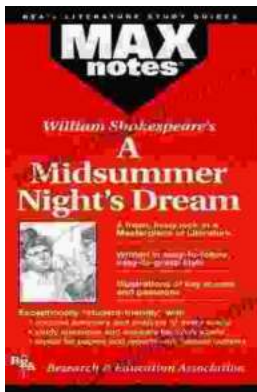
DOWNLOAD E-BOOK





The Rise of the Sharing Economy: A Transformative Force Shaping the Modern World

The sharing economy, a revolutionary concept that has reshaped various industries, has become an integral part of the modern world. From its humble beginnings to its...



Midsummer Night's Dream: Maxnotes Literature Guides

Midsummer Night's Dream is one of William Shakespeare's most beloved comedies. It is a whimsical and enchanting tale of love, magic, and...